



NTSC U/C

PlayStation



SLUS-00807
99172



CONTRA



ATARI

CENTIPEDE™

CENTIPEDE and ATARI are trademarks of and © 1999 Atari Interactive, Inc.,
a Hasbro affiliate. © 1999 Hasbro Interactive, Inc. All Rights Reserved.

Updated interactive Centipede game developed by Leaping Lizard Software, Inc.
Software development for PlayStation® version by Real Sports, LLC and Leaping Lizard Software, Inc.

The ratings icon is a trademark of the Interactive Digital Software Association.

WARNING

READ BEFORE USING YOUR PLAYSTATION® GAME CONSOLE.

A very small percentage of individuals may experience epileptic seizures when exposed to certain light patterns or flashing lights. Exposure to certain patterns or backgrounds on a television screen or while playing video games, including games played on the PlayStation® game console, may induce an epileptic seizure in these individuals. Certain conditions may induce previously undetected epileptic symptoms even in persons who have no history of prior seizures or epilepsy. If you, or anyone in your family, has an epileptic condition, consult your physician prior to playing. If you experience any of the following symptoms while playing a video game – dizziness, altered vision, eye or muscle twitches, loss of awareness, disorientation, any involuntary movement or convulsions – IMMEDIATELY discontinue use and consult your physician before resuming play.

WARNING TO OWNERS OF PROJECTION TELEVISIONS:

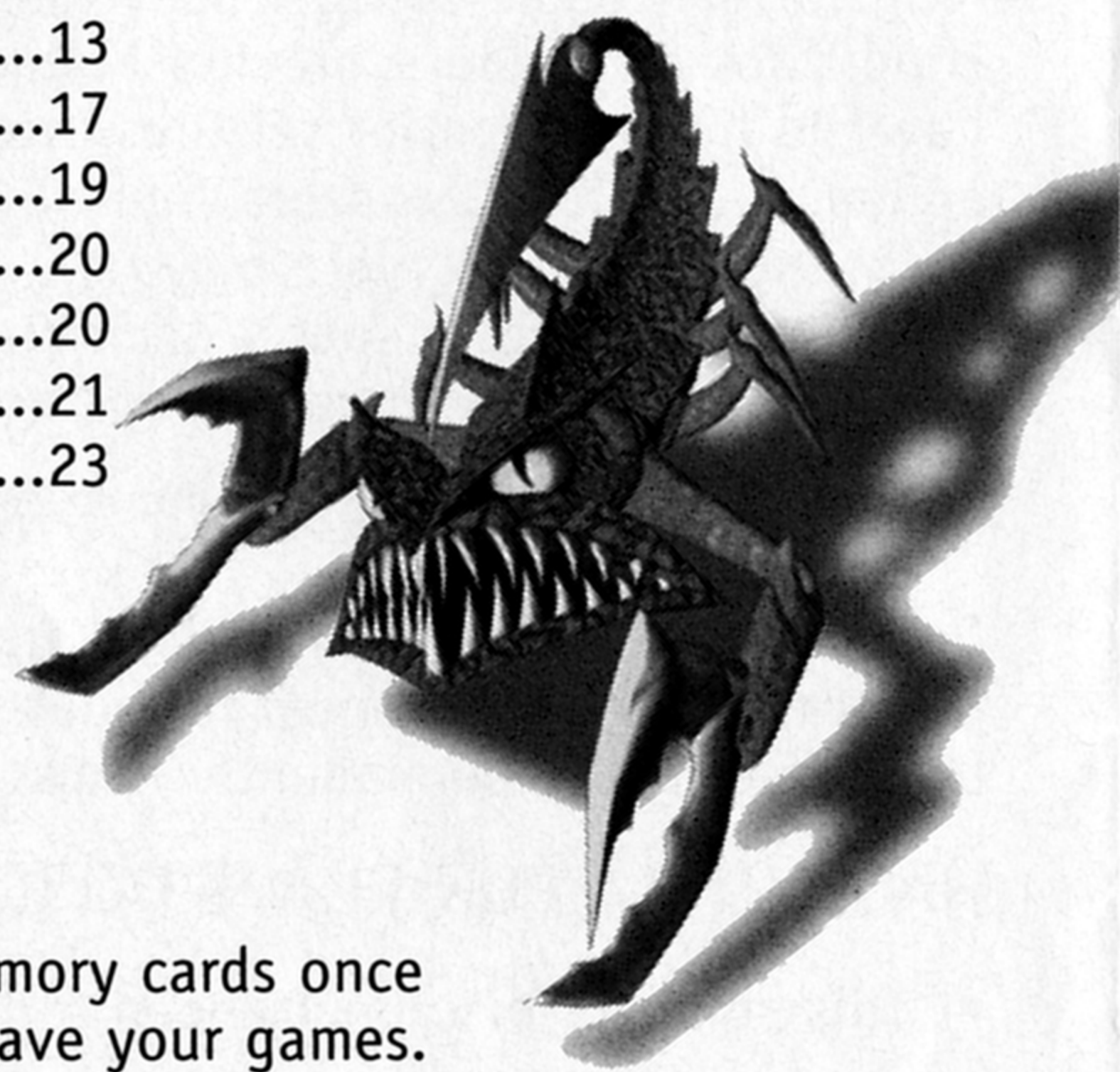
Do not connect your PlayStation® game console to a projection TV without first consulting the user manual for your projection TV, unless it is of the LCD type. Otherwise it may permanently damage your TV screen.

HANDLING YOUR PLAYSTATION® DISC:

- This compact disc is intended for use only with the PlayStation® game console.
- Do not bend it, crush it or submerge it in liquids.
- Do not leave it in direct sunlight or near a radiator or other source of heat.
- Be sure to take an occasional rest break during extended play.
- Keep this compact disc clean. Always hold the disc by the edges and keep it in its protective case when not in use. Clean the disc with a lint-free, soft, dry cloth, wiping in straight lines from center to outer edge. Never use solvents or abrasive cleaners.

TABLE OF CONTENTS

Getting Started.....	4
Controlling <i>Centipede</i>	6
Introduction.....	7
Main Menu.....	7
Options.....	8
The Arcade Game.....	8
The Adventure Game.....	11
The Power-Ups.....	12
The Targets.....	13
The Worlds.....	17
Tally Up Those Points.....	19
Hasbro Interactive's Web Sites.....	20
Technical Support.....	20
License Agreement.....	21
Credits.....	23



GETTING STARTED

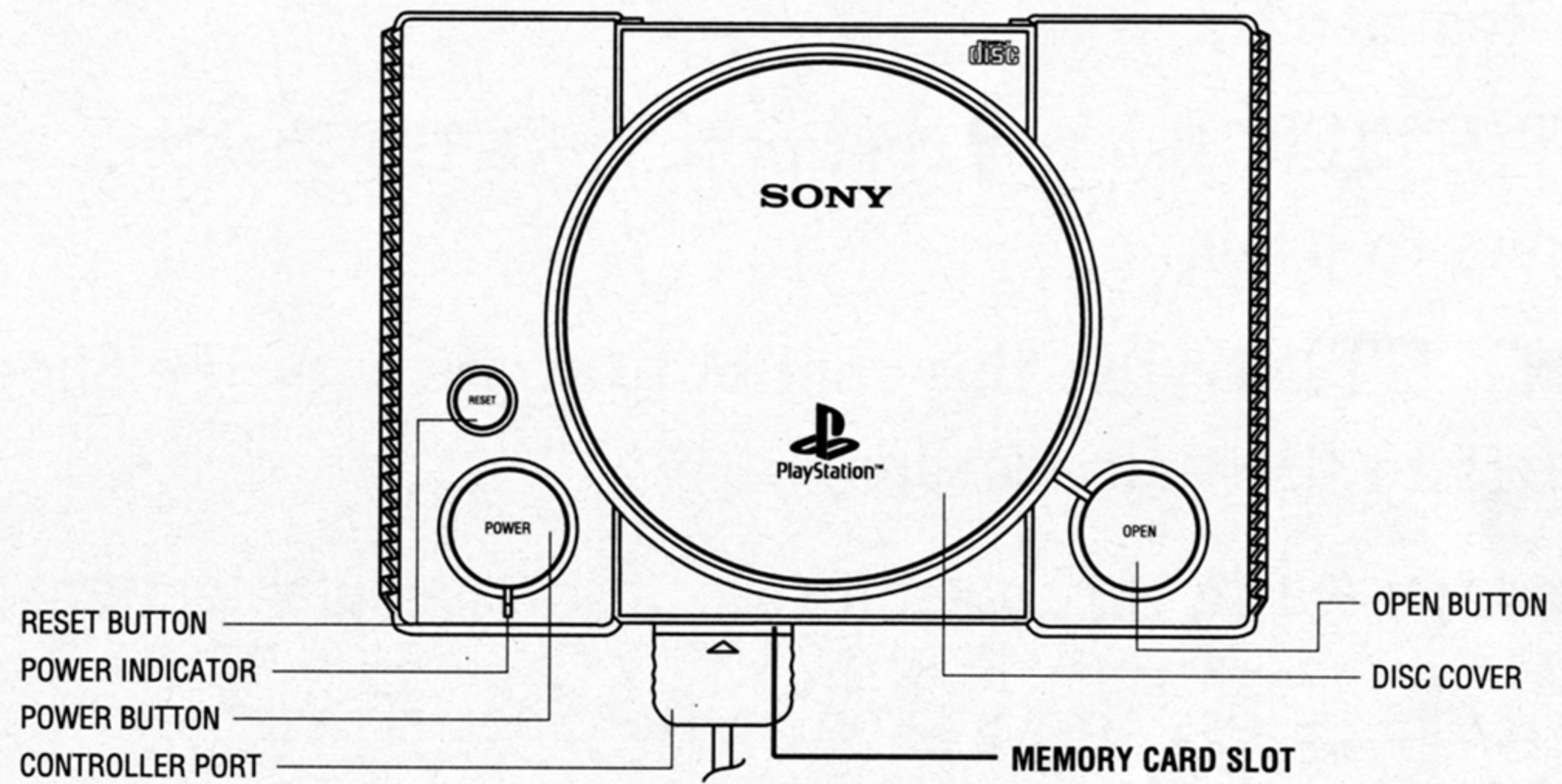
Important! Do not insert or remove peripherals or memory cards once power is turned on. You will need a memory card to save your games.

1. Set up your PlayStation® game console according to the instructions in its Instruction Manual.
2. Make sure the power is OFF before inserting or removing a compact disc.
3. Insert *Centipede* disc and close the disc cover.
4. Insert the game controllers (and memory card if you have one).

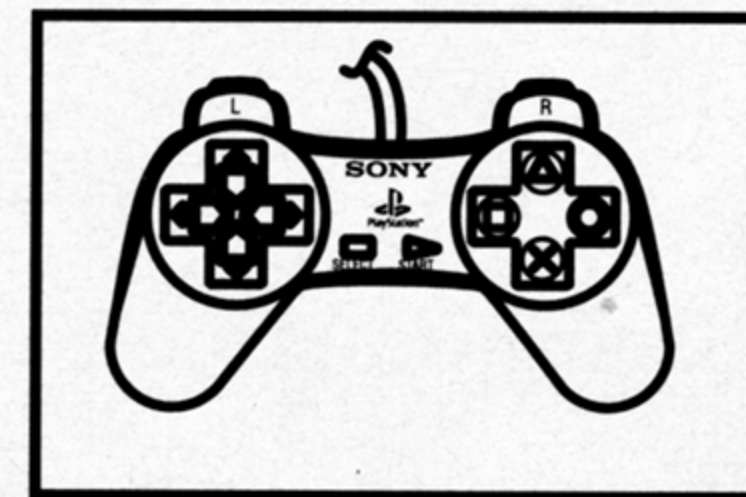
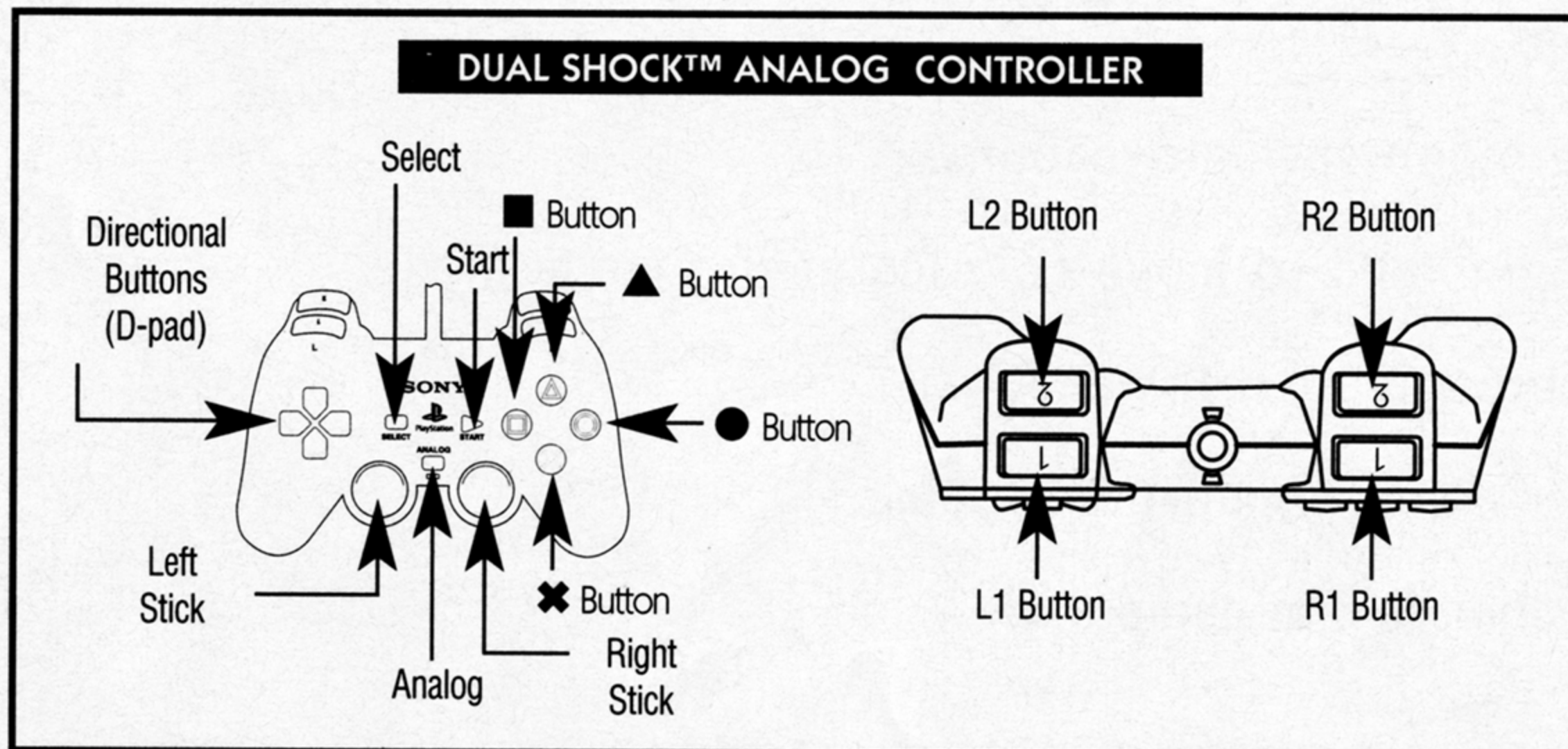
5. Turn ON the PlayStation® game console. The introductory sequence will begin.
To skip this sequence and go directly to the Main Menu, press the **✕** button.

Note: You will not be able to save your progress or game information if you don't use a memory card. Make sure there is at least one free block on your memory card before beginning your game. You are not able to swap memory cards during play and you must leave the card in the first slot of your multi-tap if you are using one.

CONSOLE



DUAL SHOCK™ ANALOG CONTROLLER



NOTE: You may have a controller that looks like this. If so, please follow the digital instructions outlined on page 6.

CONTROLLING CENTIPEDE

The following are the default controls and buttons for the PlayStation® version of *Centipede*™. You may choose from 3 different preset configurations.

DIRECTIONAL BUTTONS: Use these buttons to move The Shooter and to select menu commands.

LEFT STICK: Use this control to move The Shooter.

*Depress to jump.

RIGHT STICK: Use this control to strafe with The Shooter.

*Depress to fire Main Weapon.

✕ Button – Use this button to confirm menu selections and to fire Main Weapon.

■ Button* – Use this button to fire Special Weapon.

● Button* – Use this button to jump.

▲ Button* – Use this button to cancel out of menu selections and to view from Wally's eye level.

L1: Use this button to Strafe Left.

L2*: Use this button to cycle through special weapons.

R1: Use this button to Strafe Right, and to move ship faster in Arcade mode.

R2*: Use this button to cycle through special weapons.

START: Use this button to pause and unpause the game.

SELECT*: Use this button to change the camera view.

* Used only with the Adventure-style game.

INTRODUCTION

THE STORY BEGINS:

The story begins every hundred years. It always begins the same way, with a Legend awakening. Legend says that a multitude of armored beasts emerge from the dark core of the Earth. They swarm to the surface drawn by their master. Every hundred years they try to overtake our world and we always think we've destroyed them. The Legend also has it that every hundred years, we're wrong!

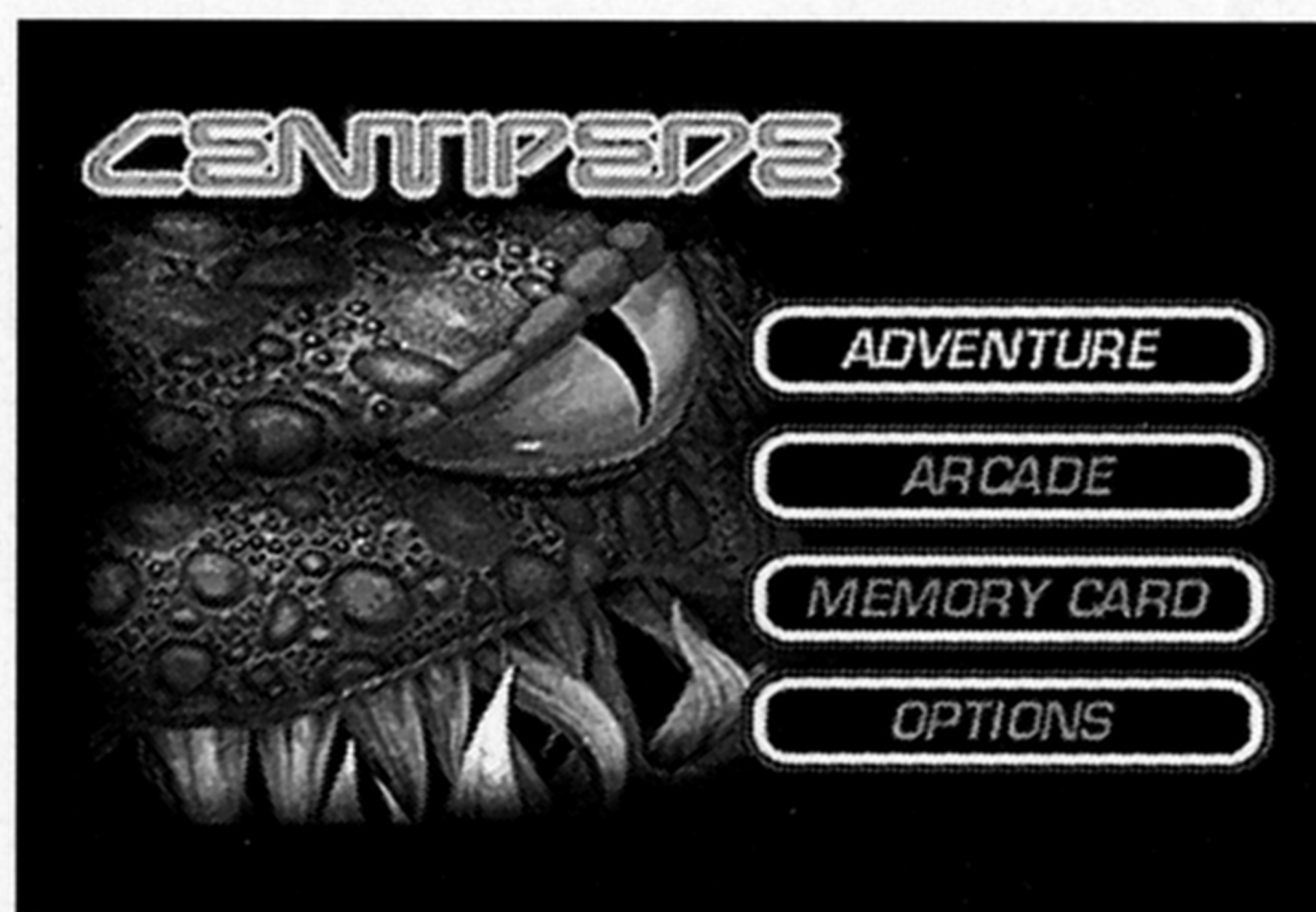
When word came down that the Legend had come to life, we built The Shooter. But we needed a hero to fly it. This year the magic stick didn't point to the usual hero. It pointed to Wally Gudmunzsun. Now Wally wasn't one of the usual heroes. In fact, he wasn't a hero at all. He was just a simple bean counter. But when you're asked to save the world, you don't ask why. You just make it happen.

MAIN MENU

At the Main Menu, you can select from the following choices:

ADVENTURE – This selection takes you to the adventure-style game of *Centipede* where you must aid Wally in stopping the hordes of Centipedes, Fleas, Spiders, Scorpions – and a slew of new and deadly bugs – from taking over the land.

ARCADE – This selection takes you to the arcade-style *Centipede* game, featuring the same addictive gameplay you remember, and a whole new look! You may select between a one-player game or a two-player game (each player taking turns). Once your game is over, you will see the High Score list. If you qualified for a high score, you will be asked to input your initials to be saved in the High Score list. To input a high score, use the directional buttons to scroll through the characters and use the **X** button to select a character. If you have a memory card, you may save your high score from one session to the next.



MEMORY CARD – This button brings up the loading and saving features of *Centipede*. You must have a memory card inserted in your PlayStation® game console prior to saving and loading a game. The memory card(s) will also save your High Scores and Controller Configurations. Make sure there is at least one free block on your memory card before beginning your game.

OPTIONS – This button brings up the Options Screen for *Centipede* where you can change the sound and music levels, configure your game controls, and view the game credits.

OPTIONS

OPTIONS SCREEN

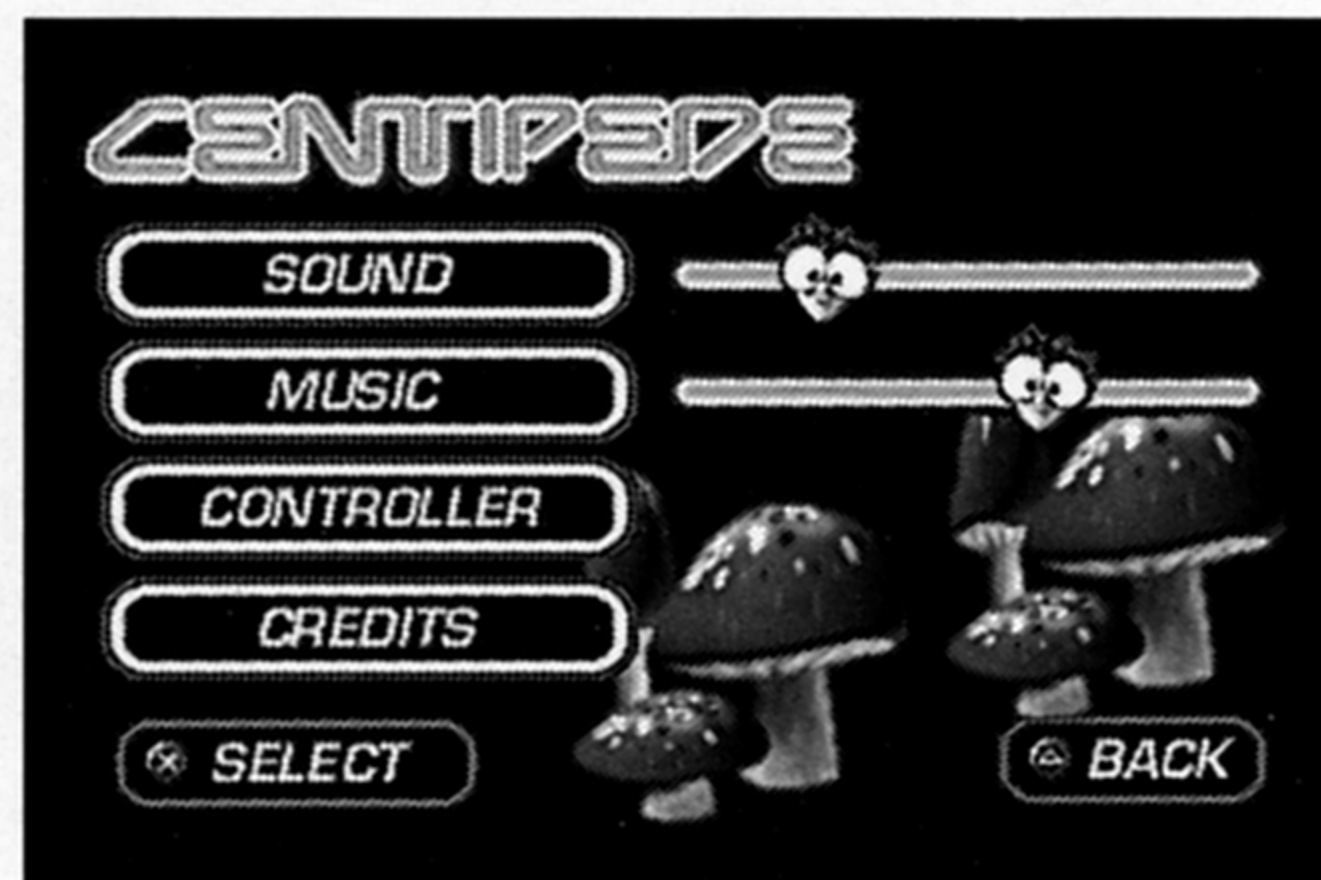
The Options Screen is where you may change various settings for the game.

Sound – Lowers or raises the volume of sound effects within the game.

Music – Lowers or raises volume of music within the game.

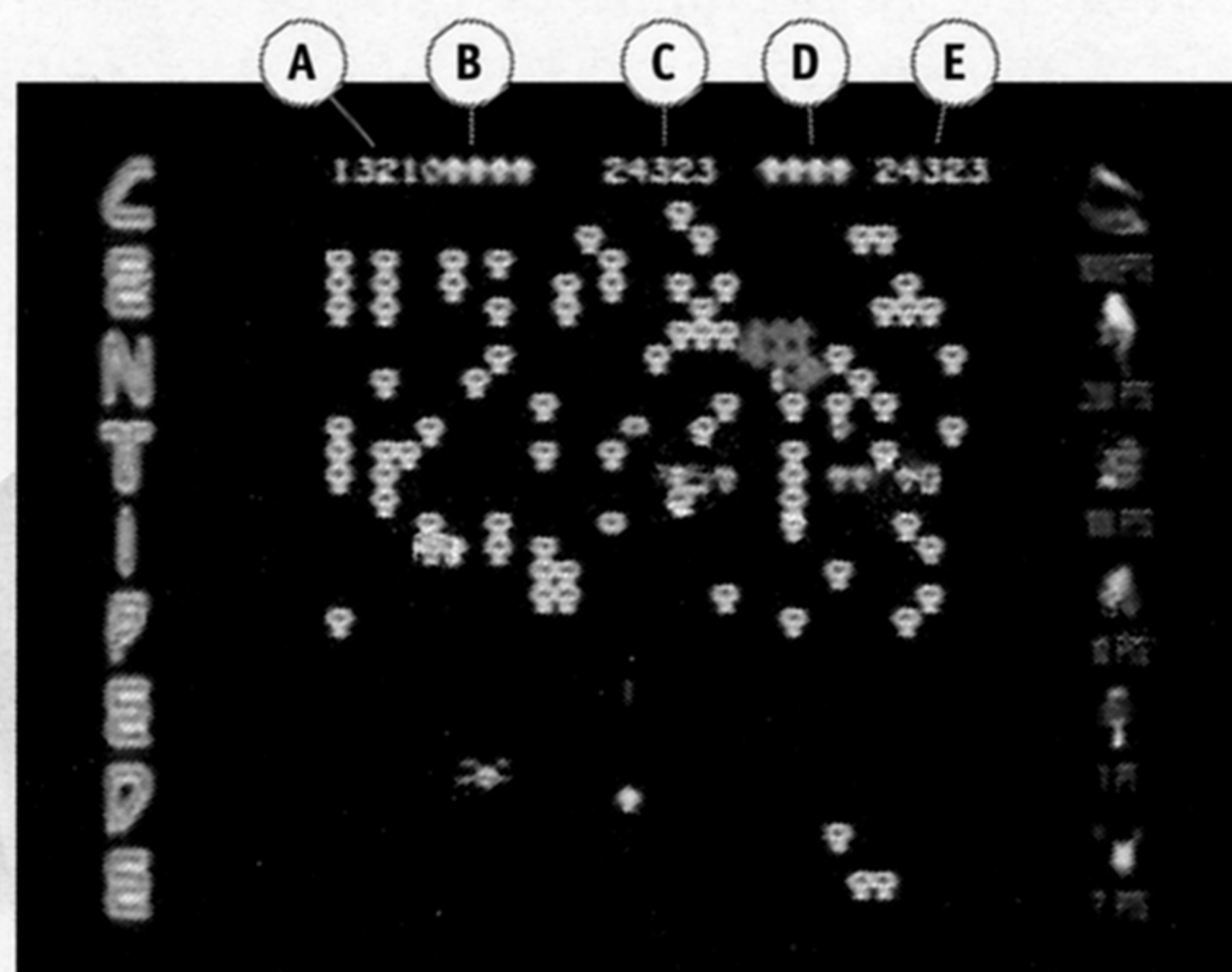
Controller – Allows for the custom configuration of the default game controls.

Credits – View the credits for *Centipede*.



THE ARCADE GAME

- A** Player 1 Score
- B** Player 1 Remaining Shooters
- C** Game High Score
- D** Player 2 Remaining Shooters
- E** Player 2 Score



THE SHOOTER

The Shooter is your means to destroy the oncoming attack waves. It can move forwards, backwards, and side-to-side always facing the same direction (forward). The Shooter may be moved freely within the lower quadrant of the game screen. Pressing the primary weapon button for The Shooter fires out a single shot. Pressing the primary weapon button, and keeping it depressed, will make The Shooter fire a stream of continual shots. Be careful! There can only be one shot from The Shooter on screen at one time. This means that during the time the last shot fired, no other shots may be fired until the previous shot hits a target or flies off the top of the screen.

BONUS! Players receive additional Shooters for every 12,000 points earned.

THE TARGETS

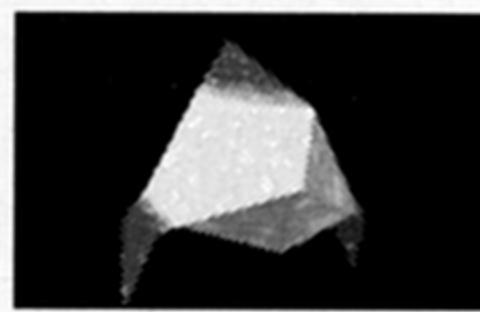
There are five targets you must destroy to gain points. If a target touches The Shooter, it destroys The Shooter on contact.



CENTIPEDES – These enemies are the primary targets of the game. They start at the top of the playing field at the start of each attack wave, then wind their way down towards your Shooter. A single shot from your Shooter destroys a centipede link and plants a mushroom in its place.



head segment = 100 points



body segment = 10 points

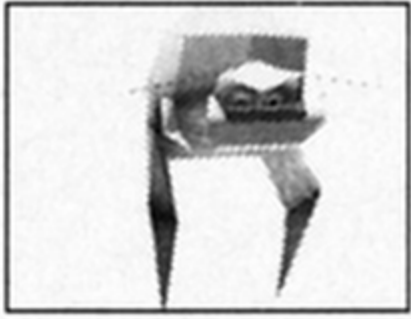


SPIDERS – These enemies are both elusive and dangerous. They start from either the left or right side of the Shooter's playing field of movement, zigzagging from one side to the other. Spiders will eat mushrooms that they come in contact with.

At close range = 900 points

At medium range = 600 points

At far range = 300 points



FLEAS – Fleas start at the top of the playing field during a centipede attack wave and descend in a straight path towards The Shooter. As the fleas make their way down, they plant mushrooms at random intervals.

200 points



SCORPIONS – The scorpions' main role is to poison mushrooms. They start from either the left or right side of the playing field, and move in a straight line from one side to the other while poisoning any mushroom they come in contact with.

1000 points

MUSHROOMS – Mushrooms are the core of the game, coming in two different forms and interacting with the other targets in different fashions. Destroying centipede links will create mushrooms in their place. Fleas plant mushrooms. Spiders eat mushrooms, and scorpions poison mushrooms. Poison mushrooms make centipedes head straight down to the bottom of the play field if they touch each other. All mushrooms take four shots to destroy completely.

Destroyed mushrooms = 1 point

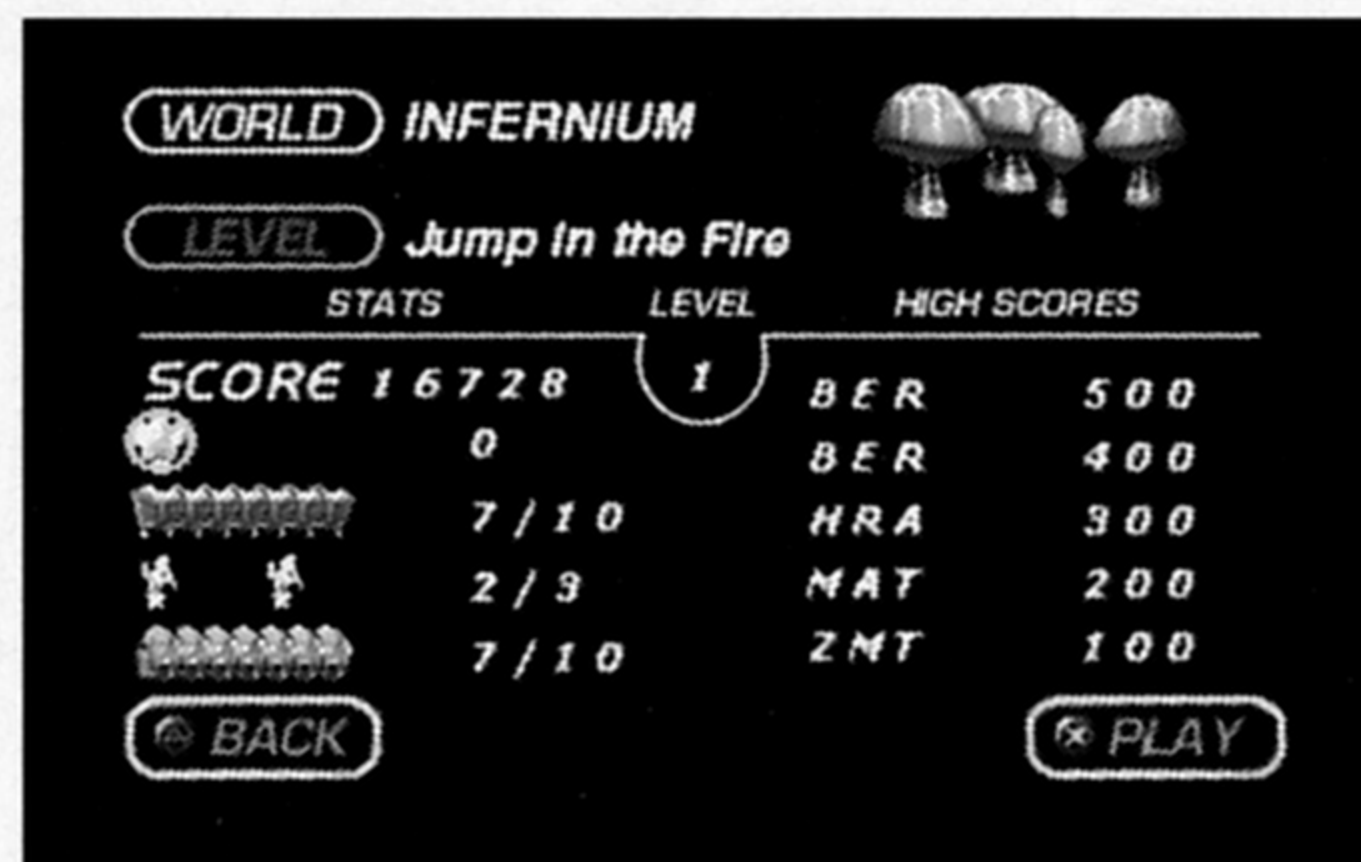
Poisoned mushrooms = 1 point

Note: Players receive 5 points per damaged or poisoned mushroom at the reset of a wave when a player loses a Shooter.

THE ADVENTURE GAME

LEVEL SELECT SCREEN

This screen is where you choose the level you wish to play. Use the directional buttons to scroll through the various game levels that are open. To select a game level, press the **X** button on the controller. To exit the menu without making a selection, press the **▲** button on the game controller. As the game progresses, new levels and new worlds open up for play. You may replay previously completed levels, or continue on in the adventure to the next newly opened level.



THE SHOOTER

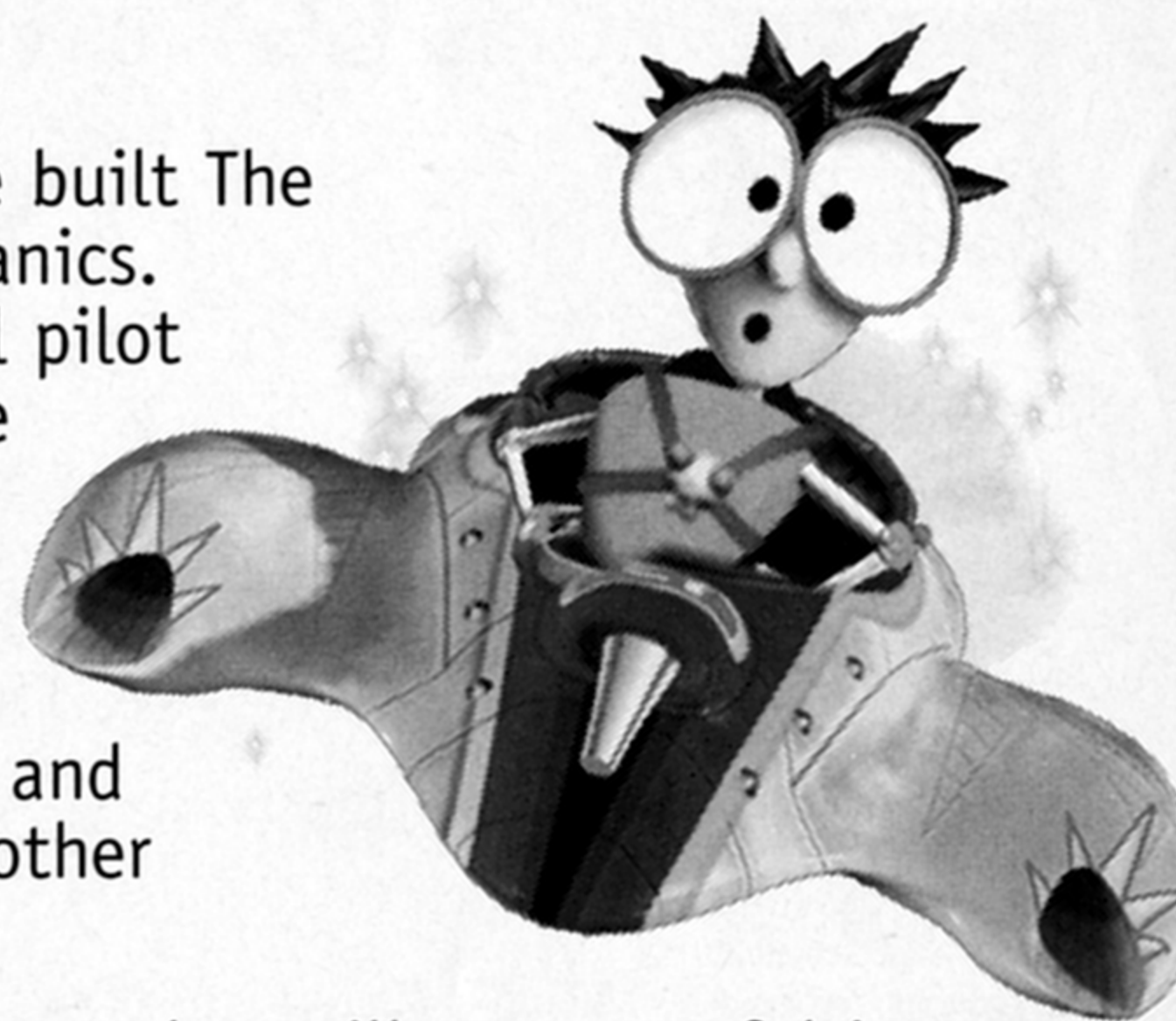
When word came down that the Legend had come to life, we built The Shooter. The Shooter is the combination of magic and mechanics. Wally, our reluctant would-be hero, and you, his partner, will pilot The Shooter through dangerous lands in hopes of ridding the lands of the insect threat.

The Shooter hovers just above solid objects. It can, when needed, spring up into the air, jumping over obstacles or reaching otherwise inaccessible areas. Unfortunately for you and Wally, The Shooter doesn't fair well over water, lava, or any other liquids.

The Shooter comes equipped with a primary magic laser weapon that will prove useful in exterminating the bug menace that has risen. It can also clear away the mushrooms that populate the land. The magic that powers the primary weapon never depletes. A good thing – you and Wally will need everything to stop the invasion.

You and Wally will not have to rely solely on The Shooter's primary weapon to get the job done. Wally's home is a land full of magic and The Shooter can utilize that magic for limited amounts of time. The magic comes in the form of power-ups that can be found throughout the various landscapes. If you destroy a mushroom while it is flashing, a power-up will also appear.

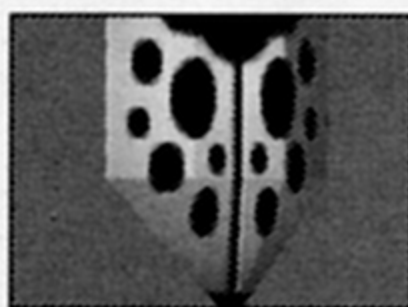
Note: You may change the camera view at any time during game play by pressing the **SELECT** button.



THE POWER-UPS

Power-ups give The Shooter a variety of abilities, some for a limited amount of time, others for a limited number of uses.

Special Power-Ups



Ladybug Shield – The Shooter can hold up to 3 of these at one time. Each shield makes The Shooter invulnerable to two hits from an enemy, projectile, or poisonous mushroom.



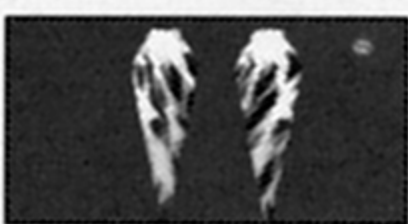
Invulnerability – Makes The Shooter invulnerable to hits from an enemy, projectile, or poisonous mushroom for a limited amount of time.



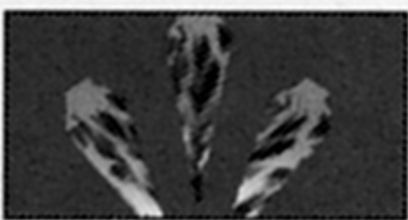
Extra Life – Gives the player an additional Shooter.

Laser Power-Ups

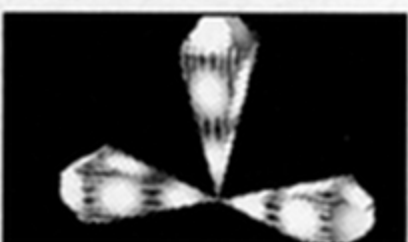
(These last for a limited amount of time only.)



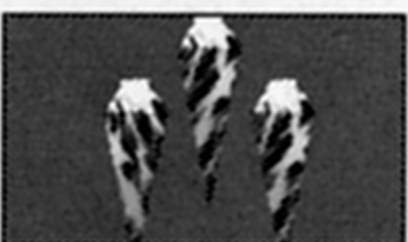
Double Shot – Magic laser upgrade that shoots 2 alternating beams three times as fast as The Shooter's primary magic laser weapon.



Triple Shot – Magic laser upgrade that shoots in 3 directions at once.



Side Shot – Magic laser upgrade that, like the Triple Shot, shoots in 3 directions, only this one fires directly forward and from each side of The Shooter.



Ground Skimmer – Magic laser upgrade that hugs the ground terrain. This allows The Shooter to destroy bugs that are on higher or lower slopes.



Airborne Shot – Magic laser upgrade that fires one shot straight ahead and two shots into the air. This is useful against flying enemies.

Special Power-Ups

(These have a limited inventory.)



Rocket – When fired, tends to track the closest winged adversary within an area. A player receives 5 shots after picking up this power-up.



Flame Thrower – Enables the player to shoot out a curving flame for a brief period of time. A player receives 5 shots after picking up this power-up.



Missile – When fired, tracks the closest flying enemy within the area with a much greater accuracy than the Rocket. A player receives 4 shots after picking up this power-up.



Burst – When fired, shoots out multiple projectiles in a radius away from the Shooter. A player receives 5 shots after picking up this power-up.



Lob Bomb – Enables the player to throw bombs at the intended target. Be careful! Bombs may damage or destroy The Shooter just as easily as they do the enemy. A player receives 5 shots after picking up this power-up.



Throwing Star – When released, this large, spinning blade mows through anything in its path until it hits the ground. A player receives 3 shots after picking up this power-up.



Super Missile – When fired, tracks the closest aerial opponent with speed and efficiency superior to that of the Missile. A player receives 2 Super Missiles after picking up this power-up.

THE TARGETS

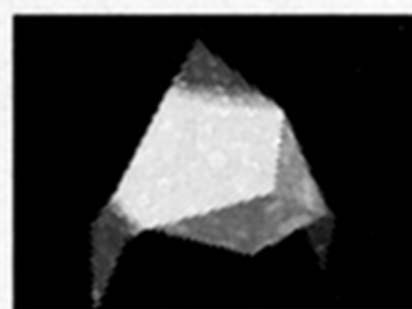
The Queen Pede will stop at nothing to ensure that, this time around, it's "Game Over" for the Wee inhabitants of Weedom. She has carefully stocked her ranks of evil bug minions with adversaries of the past (Centipedes, Fleas, Spiders, and Scorpions) and enemies of the present (Enforcer Flies, Borer Bugs, Fire Beetles, and other vile pests). Our Wee observers have seen and reported back on most of the enemies. Unfortunately, we have very little information about Evile, the dreaded home of the Queen Pede.



Centipedes – are your main opponent. Any collision between a Centipede and The Shooter results in the loss of life, unless The Shooter has a special power-up invoked. The Centipedes wind through the levels on a traversing path. Centipedes are capable of destroying Wee buildings and harming Wee people. A single shot from The Shooter will destroy any segment and cause a mushroom to grow. In the adventure game, a Centipede will change direction if you cross its path. Use this tactic to draw Centipedes away from vulnerable ground targets you are trying to protect.



head segment = 100 points



body segment = 10 points



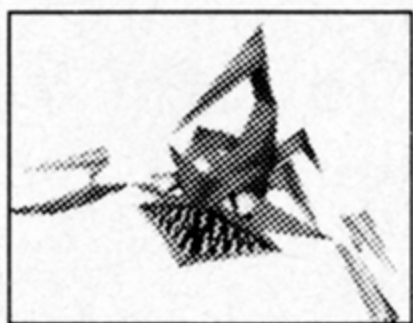
Fleas – constantly thwart your mushroom-destroying efforts by creating new mushrooms. It takes two shots from The Shooter's default laser to destroy a flea. Fleas cross the levels in straight lines, planting mushrooms as they go. Fleas plant both normal mushrooms and flashing mushrooms. If a player shoots a flashing mushroom while it is still flashing, the mushroom will generate a power-up. So, killing fleas can actually reduce the number of potential power-ups that you may have access to. However, you will most certainly lose a life if you make contact with a flea.

200 points



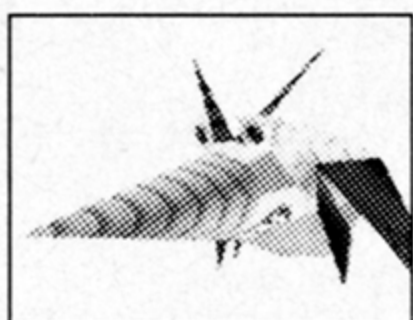
Spiders – are one of your major opponents. They bound around the level, seeking you out, destroying all mushrooms and power-ups that they come in contact with. While their mushroom-destroying capabilities may actually benefit the player, leaving a spider unattended can easily lead to them sneaking up and destroying you.

900, 600, 300 points depending on their range from you when destroyed.



Scorpions - traverse the levels in straight paths, turning all mushrooms that they come in contact with into poisonous mushrooms. If a Centipede comes into contact with a poisonous mushroom, it will change its course and move swiftly towards The Shooter. Mushrooms that have been touched by a scorpion will remain poisoned until they are either destroyed or you lose a life, at which point they change back into normal mushrooms.

1000 points



Borer Bugs - have the awesome ability of being able to drill through any object with their diamond tipped noses. Borer bugs will attack city gates, buildings, and any mushrooms they encounter on their path of destruction.

400 points



Mortar Bugs - These are bomb-lobbing, fiendish opponents. They steadily stalk their targets and then launch destructive mortar shells at them. Even at the moment of death, they find the energy to lob a grenade in a final attempt to cause additional destruction.

300 points



Enforcer Flies - are the first winged adversary you will encounter. They patrol the skies on paths of destruction. When they come within range of you, they will begin launching deadly bombs.

600 points



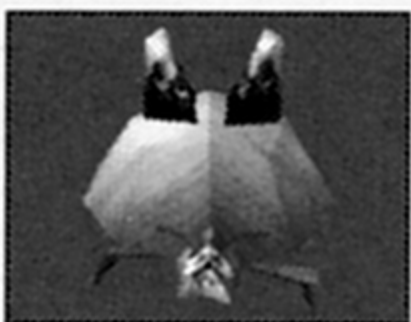
Freezer Beetles - nothing is more frustrating in your quest to save the Wee folk than the dreaded Freezer Beetle. These creatures freeze Wee people, making it hard for you to save them. Freezer beetles may also create exploding Ice Mushrooms as they crawl around the land.

500 points



Mosquitoes – Talk about a big pest. Mosquitoes buzz around looking for Star Crystals so they can suck the mystical energy from them. Mosquitoes will not hesitate to make a quick snack out of The Shooter if it gets in the way.

700 points



Fire Beetles – lob four fireball projectiles at once from the vents on the top of their shells. You must use great care when encountering this diabolical beast. Fire Beetles wander the levels of Infernum blowing up as many objects as they can while transforming normal mushrooms into dangerous Fire mushrooms.

600 points



Dragonflies – are winged, fire-breathing adversaries. Dragonflies mercilessly pursue you through the smoke filled skies of the Infernum levels. You must be quick to react and use your weaponry to destroy these monsters before being turned into burnt toast.

800 points

THE WORLDS

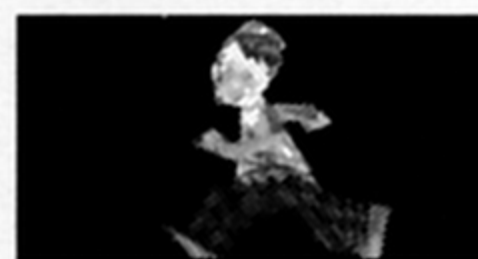
A hundred years have passed and the Dreaded Eclipse has returned, bringing with it the Legend awakening. You and Wally must travel across 4 dangerous regions and many treacherous lands, in your heroic quest to save all of Weedom from the legions of vicious insects, terrible bug hordes and ultimately, the Queen Pede.

During your quest, you will be called on to perform special tasks such as saving Wee people and protecting Wee buildings. Although you do not have to perform these objectives to move on in your quest, you will be rewarded for doing so and they will determine just how much of a hero you are.

WEEDOM – This is where your adventure begins. You and Wally must confront the enemy for the first time as the bug hordes try and destroy everything in their path, including the Wee villages and towns. Together, you and Wally must exterminate or push back the bug menace from the areas, saving the buildings and rescuing the Wee people that are in harm's way.



Wee Buildings



Wee Citizens

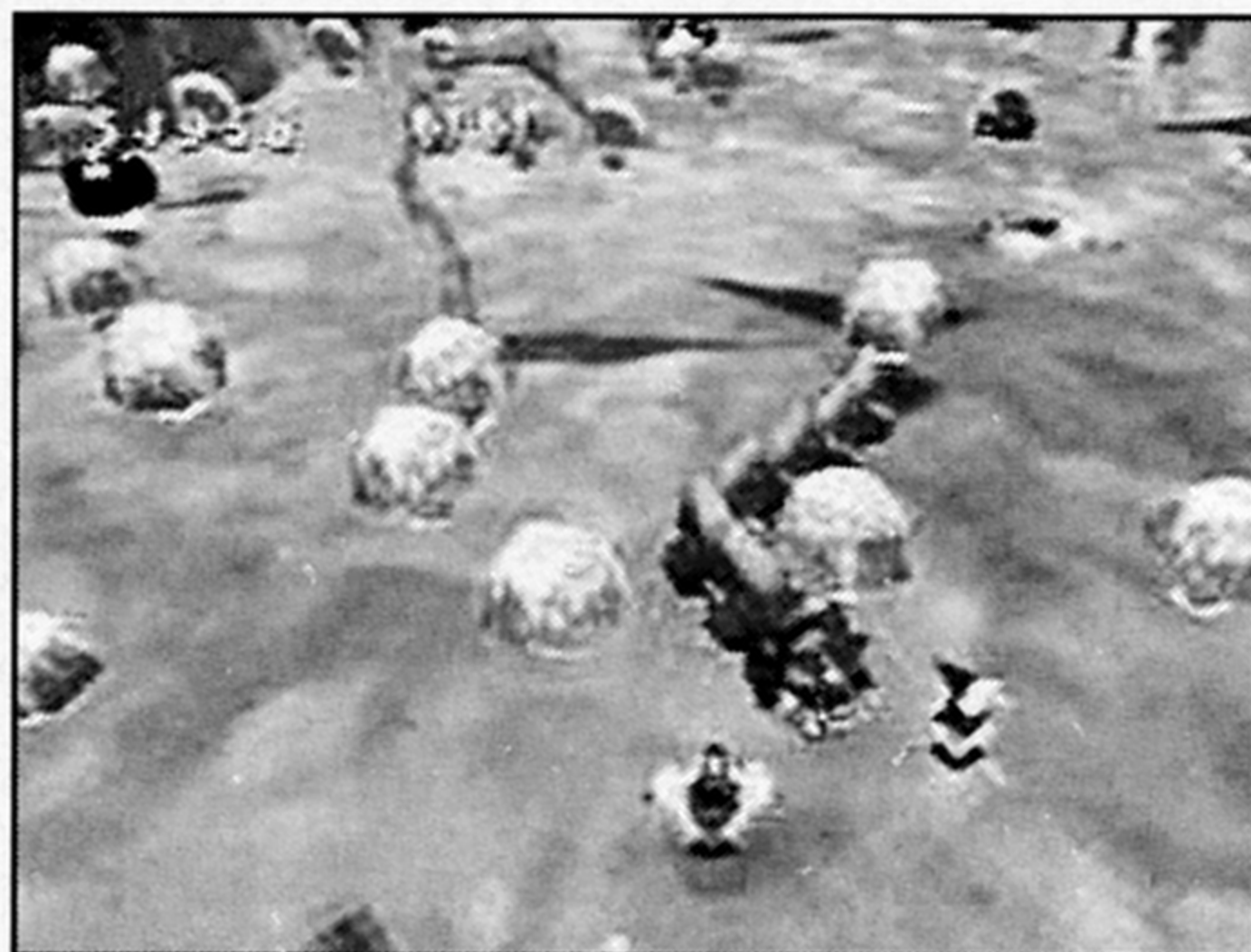


Wee Druid



Star Crystal

FROSTONIA – This magical mountainous region is home to both Wee Citizens and Wee Druids alike. This is a place of great power for the Wee Druids, who study and harness the magic in hopes that one day they may understand the Dreaded Eclipse and stop the Centipedes from ever attacking again. In Frostonia, you will encounter the sacred Star Crystals. These powerful gems are used by the Wee druids to study the eclipse. You will need to defend the Crystals against the Mosquitoes, who can drain their mystical energies.



Wee Buildings



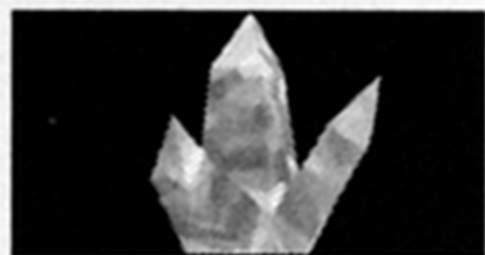
Eskiwees



Wee Druids



Talismans



Star Crystals



Hero Statues



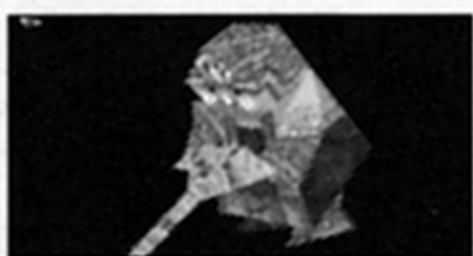
Ice Mushrooms – Created by Freezer Beetles. When destroyed, this mushroom explodes into shards that damage anything they touch.



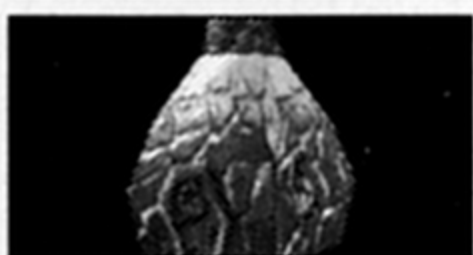
Stone Mushrooms – These mushrooms can sustain more damage before being destroyed.

INFERNIUM – Infernum is one of the hottest lands known to the Wee people. It is also the only place that holds the precious Star Crystals in abundance. You and Wally must vanquish the bug minions of the Queen Pede in this region, as well as save the poor Wee Miners, their dwellings, mining equipment, and extracted Star Crystals.





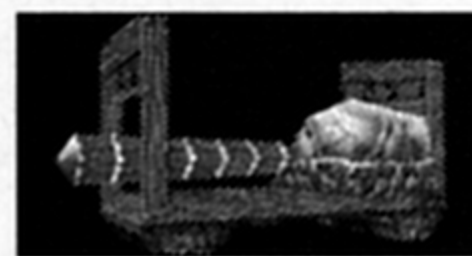
Wee Miners



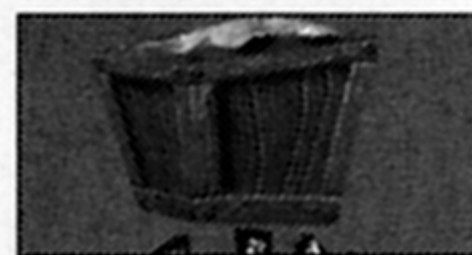
Wee Dwellings



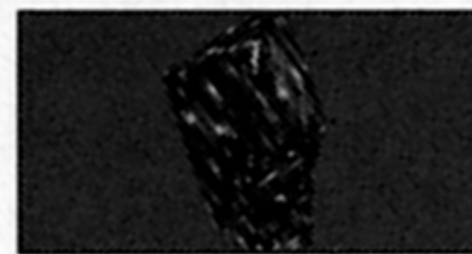
Fire Mushrooms -
created by Fire Beetles. When
destroyed, the mushrooms
explode into four deadly fireballs.



Wee Mining Equipment

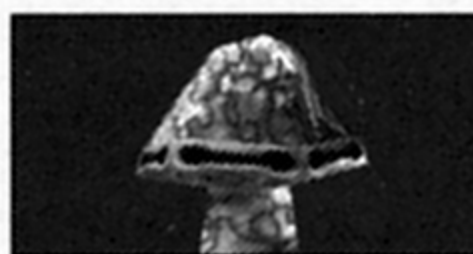


Mining Carts



Extracted Star Crystals

EVILE - The name alone should tell you this is no place for you or a Wee person to venture. But you must. It is this region that Wee people dread and rightly so. It is dark and foreboding for starters, and is now home to the Queen Pede. It's going to take all of your skill (and a bunch of courage from Wally!) to meet this menace at her front doorstep and rid Weedom of the terrible Legend forever.



Metallic Mushrooms - When
destroyed, these mushrooms explode
into harmful shards of metal mowing
down anything in their path.



TALLY UP THOSE POINTS!

At the end of each level, you will get to see how well you did. A number of bonus points will be awarded according to the bonus objectives of the level performed. With the addition of bonus points, you may receive additional Shooters (at every 12,000 points). The higher your score, the better hero you have proven to be.

There is a general High Scores table for the Adventure mode that records the top ten *Centipede* Adventure high scores. There are level high scores as well, that show the top five scores for each of the individual levels.

HASBRO INTERACTIVE'S WEB SITES

Hasbro Interactive has exciting, full and active web sites dedicated to ensure you get the most out of your new games. You can visit us at :

<http://www.hasbro-interactive.com>

Kids, check with your parent or guardian before visiting the site.

Visit and you will discover that Hasbro Interactive web sites contain such things as:

Technical Support, Hints and Tips, Player Contact Information, Software Upgrades, Demos, Interaction, Interviews, Competitions, Chat and Community, Downloadable Themes, and much more.

We are constantly updating our web sites so stop by and visit us frequently. With events and new additions planned, you won't want to miss out.

ONLINE STORE If you enjoyed this product and would like to purchase other great Hasbro Interactive products online, stop by the ONLINE STORE for convenient shopping from home. Purchasers must be 18 years or older or have parent's permission.

TECHNICAL SUPPORT

If you are having technical difficulties with the *Centipede*[™] PlayStation[®] game, and need to call Technical Support, please have the the correct name of the game available (and be ready to take notes).

For telephone technical support, please call (410) 568-2377. Support hours are from 8:00 a.m. to 12:00 midnight, Eastern Standard Time, Monday through Friday, and from 8:00 a.m. to 8:00 p.m., Eastern Standard Time, Saturday and Sunday, holidays excluded. No game hints will be given through this number.

You may communicate with our technical support directly from the Internet or through popular commercial online providers, such as America Online, Prodigy, and CompuServe. Direct any E-mail questions concerning the *Centipede*[™] PlayStation[®] game to: HI@hasbro.com

To find out more about the *Centipede*[™] PlayStation[®] game, please visit:

<http://www.atari-centipede.com>

Kids, check with your parent or guardian before visiting the site.

For information on any other Hasbro Interactive product, please visit:

<http://www.hasbro-interactive.com>

Kids, check with your parent or guardian before visiting the site.

LICENSE AGREEMENT

*** IMPORTANT ***

This is a legal agreement between the end user ("You") and Hasbro Interactive, Inc., its affiliates and subsidiaries (collectively "Hasbro Interactive"). This Agreement is part of a package (the "Package") that also includes a game cartridge or disc (collectively, the "Game") and certain written materials (the "Documentation").

BY INSTALLING THE GAME, YOU ACKNOWLEDGE THAT YOU HAVE READ ALL OF THE TERMS AND CONDITIONS OF THIS AGREEMENT, UNDERSTAND THEM, AND AGREE TO BE BOUND BY THEM. YOU UNDERSTAND THAT, IF YOU PURCHASED THE PACKAGE FROM AN AUTHORIZED RESELLER OF HASBRO INTERACTIVE, THAT RESELLER IS NOT HASBRO INTERACTIVE'S AGENT AND IS NOT AUTHORIZED TO MAKE ANY REPRESENTATIONS, CONDITIONS OR WARRANTIES, STATUTORY OR OTHERWISE, ON HASBRO INTERACTIVE'S BEHALF NOR TO VARY ANY OF THE TERMS OR CONDITIONS OF THIS AGREEMENT.

If You do not agree to the terms of this Agreement, promptly return the entire Package to the place You obtained it for a full refund.

LIMITED LICENSE: You are entitled to use this Game for your own use, but may not sell or transfer reproductions of the Game or Documentation to other parties in any way.

OWNERSHIP; COPYRIGHT: Title to the Game and the Documentation, and patents, copyrights and all other property rights applicable thereto, shall at all times remain solely and exclusively with Hasbro Interactive and its licensors, and You shall not take any action inconsistent with such title. The Game and the Documentation are protected by United States, Canadian and other applicable laws and by international treaty provisions. Any rights not expressly granted herein are reserved to Hasbro Interactive and its licensors.

OTHER RESTRICTIONS: You may not cause or permit the disclosure, copying, renting, licensing, sublicensing, leasing, disseminating or otherwise distributing of the Game or the Documentation by any means or in any form, without the prior written consent of Hasbro Interactive. You may not modify, enhance, supplement, create derivative work from, adapt, translate, reverse engineer, decompile, disassemble or otherwise reduce the Game to human readable form.

LIMITED WARRANTY:

Hasbro Interactive warrants for a period of ninety (90) days following original retail purchase of this copy of the Game that the Game is free from substantial errors or defects that will materially interfere with the operation of the Game as described in the Documentation. This limited warranty applies to the initial purchaser only. EXCEPT AS STATED ABOVE, HASBRO INTERACTIVE MAKES NO OTHER WARRANTY OR CONDITION, EXPRESS OR IMPLIED, STATUTORY OR OTHERWISE, REGARDING THIS Game. THE IMPLIED WARRANTY THAT THE GAME IS FIT FOR A PARTICULAR PURPOSE AND THE IMPLIED WARRANTY OF MERCHANTABILITY SHALL BOTH BE LIMITED TO THE NINETY (90) DAY DURATION OF THIS LIMITED EXPRESS WARRANTY. THESE AND ANY OTHER IMPLIED WARRANTIES OR CONDITIONS, STATUTORY OR OTHERWISE, ARE OTHERWISE EXPRESSLY AND SPECIFICALLY DISCLAIMED. Some jurisdictions do not allow limitations on how long an implied warranty or condition lasts, so the above limitation may not apply to You. This limited warranty gives You specific legal rights, and you may also have other rights which vary from jurisdiction to jurisdiction.

If you believe you have found any such error or defect in the Game during the warranty period, (i) if you are in the United States, call Hasbro Interactive's Consumer Affairs Department at 800-683-5847 between the hours of 8:00 a.m. and 12:00 a.m. midnight. Monday through Friday (Eastern Time) and 8:00 a.m. to 8:00 p.m. Saturday and Sunday, holidays excluded, and provide your

Product number; or (ii) if you are outside the United States, send your original Game to Hasbro Interactive at Caswell Way, Newport, Gwent, NP9 0YH, United Kingdom, together with a dated proof of purchase, your Product number, a brief description of such error or defect and the address to which it is to be returned. If you have a problem resulting from a manufacturing defect in the Game, Hasbro Interactive's entire liability and Your exclusive remedy for breach of this limited warranty shall be the replacement of the Game, within a reasonable period of time and without charge, with a corrected version of the Game. Some jurisdictions do not allow the exclusion or limitation of relief, incidental or consequential damages, so the above limitation or exclusion may not apply to You.

HASBRO INTERACTIVE SHALL NOT BE LIABLE FOR SPECIAL, INCIDENTAL, CONSEQUENTIAL, EXEMPLARY OR OTHER INDIRECT DAMAGES, EVEN IF HASBRO INTERACTIVE IS ADVISED OF OR AWARE OF THE POSSIBILITY OF SUCH DAMAGES. IN NO EVENT SHALL HASBRO INTERACTIVE'S LIABILITY EXCEED THE PURCHASE PRICE OF THIS PACKAGE. Some jurisdictions do not allow the exclusion or limitation of special, incidental, consequential, indirect or exemplary damages, or the limitation of liability to specified amounts, so the above limitation or exclusion may not apply to You.

GENERAL: This Agreement constitutes the entire understanding between Hasbro Interactive and You with respect to subject matter hereof. Any change to this Agreement must be in writing, signed by Hasbro Interactive and You. Terms and conditions as set forth in any purchase order which differ from, conflict with, or are not included in this Agreement, shall not become part of this Agreement unless specifically accepted by Hasbro Interactive in writing. You shall be responsible for and shall pay, and shall reimburse Hasbro Interactive on request if Hasbro Interactive is required to pay, any sales, use, value added (VAT), consumption or other tax (excluding any tax that is based on Hasbro Interactive's net income), assessment, duty, tariff, or other fee or charge of any kind or nature that is levied or imposed by any governmental authority on the Package.

EXPORT AND IMPORT COMPLIANCE: In the event You export the Game or the Documentation from the country in which You first received it, You assume the responsibility for compliance with all applicable export and re-export regulations, as the case may be.

GOVERNING LAW; ARBITRATION: This Agreement shall be governed by, and any arbitration hereunder shall apply, the laws of the Commonwealth of Massachusetts, U.S.A., excluding (a) its conflicts of laws principles; (b) the United Nations Convention on Contracts for the International Sale of Goods; (c) the 1974 Convention on the Limitation Period in the International Sale of Goods; and (d) the Protocol amending the 1974 Convention, done at Vienna April 11, 1980.

Any dispute, controversy or claim arising out of or relating to this Agreement or to a breach hereof, including its interpretation, performance or termination, shall be finally resolved by arbitration. The arbitration shall be conducted by three (3) arbitrators, one to be appointed by Hasbro Interactive, one to be appointed by You and a third being nominated by the two arbitrators so selected or, if they cannot agree on a third arbitrator, by the President of the American Arbitration Association ("AAA"). The arbitration shall be conducted in English and in accordance with the commercial arbitration rules of the AAA. The arbitration, including the rendering of the award, shall take place in Boston, Massachusetts, and shall be the exclusive forum for resolving such dispute, controversy or claim. The decision of the arbitrators shall be binding upon the parties hereto, and the expense of the arbitration (including without limitation the award of attorneys' fees to the prevailing party) shall be paid as the arbitrators determine. The decision of the arbitrators shall be executory, and judgment thereon may be entered by any court of competent jurisdiction. Notwithstanding anything contained in this Paragraph to the contrary, Hasbro Interactive shall have the right to institute judicial proceedings against You or anyone acting by, through or under You, in order to enforce Hasbro Interactive's rights hereunder through reformation of contract, specific performance, injunction or similar equitable relief.

CREDITS

REAL SPORTS, L.L.C.
REALSPORTSGAMES.COM

PRODUCTION:

PROGRAMMING

Brian Rice
Patrick Alphonso
Pierre Maloka
David Brumbaugh
Ken Hurley
John Sanderson
Lee Waggoner

ART

Jeff Troutman

EXECUTIVE PRODUCER

Robin Antonick

ASSOCIATE PRODUCER

Gail Musolino

CASTING/TALENT

Alex Jarett

MANAGEMENT:

PRESIDENT

Robin Antonick

VICE PRESIDENT, TECHNOLOGY

Pierre Maloka

VICE PRESIDENT, BUSINESS DEVELOPMENT EXECUTIVE

Alex Jarett

Leaping Lizard Software

MANAGEMENT:

DIRECTOR OF PRODUCT DEVELOPMENT

Eric Albers

DIRECTOR OF RESEARCH AND DEVELOPMENT

Chris Green

PRODUCTION:

PROJECT MANAGER

Elaine Albers

LEAD LEVEL DESIGNER, SENIOR ARTIST

Mark Bullock

LEAD DESIGNER, AI PROGRAMMER

Richard Rouse III

SENIOR PROGRAMMERS

Eric Albers
Sergey Datskovskiy
Chris Green
Gary Skinner

SENIOR ARTISTS/ ANIMATORS

Jane Miller
Steve Ogden

PROGRAMMING INTERNS

John Marzulli
David Smith

Mondo Media

PRODUCER

Melissa Kangeter

ART DIRECTOR/DESIGNER

Dean MacDonanld

ARTISTS

Bob Jeffery
Cindy Harrison
David Horowitz
Manny Marquez
Kathryn Liu
Kelley Lamsens
Leila Noorani
Aubrey Ankrum
Britt Anderson
Marco Bertoldo

1205 Recording

Greg Sweeney

Hasbro Interactive

MANAGEMENT:

PRESIDENT OF HASBRO INTERACTIVE

Tom Dusenberry

PRODUCER

Jeff "Bootch" Buccellato

EXECUTIVE PRODUCER

Michael "Big Mike" Glosecki

V. P. PRODUCT DEVELOPMENT WORLDWIDE

Kevin Gillespie

V.P. RESEARCH AND DEVELOPMENT

Tony Parks

CREATIVE DIRECTOR

David Walls

ASSOCIATE GAME DESIGNER

Scott Balaban

DIRECTOR OF BUSINESS DEVELOPMENT

John Sutyak

OPERATIONS AND SPECIAL PROJECTS MANAGER

Tracy Kureta

US PROJECT COORDINATOR

Rik Alexander

LOCALIZATION

Sam Baker
Anton Lorton
Ulrich Muhl
Jacques Martine
Jinglebell
SDL PolyLang
International

CREATIVE SERVICES:

DIRECTOR OF CREATIVE SERVICES

Steve Webster

ART DIRECTOR

Steve Martin

GRAPHIC DESIGNER

Jennifer Brackett

EDITORIAL SPECIALIST

Elizabeth Mackney

DIRECTOR OF QUALITY ASSURANCE

Michael Craighead

QUALITY ASSURANCE

SUPERVISOR

Kurt Boutin

TESTING

Mark Huggins
Chris Carr
Dan McJilton
Jake Hopkins
Anthony Constantino
Rob Swain
Tony Hunter
James Bostick
Mark Smith

MANAGER OF TECHNICAL SERVICE

Tony Moreira

V.P. OF TECHNOLOGY

Rich Reily

MARKETING:

PRODUCT MANAGER

Mark Goodreau

DIRECTOR OF MARKETING

Rich Cleveland

V.P. OF MARKETING

John Hurlbut

PUBLIC RELATIONS:

DIRECTOR OF PUBLIC RELATIONS

Dana Henry

ADMINISTRATIVE SUPPORT:

Michelle Bailey
Sarah Perry
Denise Wiley

LEGAL & FINANCE:

V.P. OF FINANCE

Ron Parkinson

Donna Mahan
Bruce Kelly
Donna Fuchs
Linda Ferros

SPECIAL THANKS:

Eric Hayashi
Tom Zahorik
Heather Barclay
Absolute Quality
Ed Logg
Donna Bailey
Bill "Wonderboy" Colby

He's Back!

Frogger®



The Classic 80's Arcade Game is now Revived, Rebuilt & Ready to Hop! Frogger is now armed with Power Croak, Super Jump and a Heat Seeking Tongue. 9 Unique worlds. Dozens of challenging levels! Multi-Player split screen action!



CENTIPEDE™ and ATARI® are trademarks of and © 1999 Atari Interactive, Inc., a Hasbro affiliate. FROGGER is a trademark of KONAMI CO., LTD. © 1981 KONAMI All rights reserved. © 1999 Hasbro Interactive, Inc. All Rights Reserved.
Hasbro Interactive, Inc., 50 Dunham Road, Beverly, Massachusetts 01915 USA



Licensed by Sony Computer Entertainment America for use with the PlayStation game console. PlayStation and the PlayStation logos are registered trademarks of Sony Computer Entertainment Inc. The ratings icon is a trademark of the Interactive Digital Software Association. Manufactured and printed in the U.S.A. THIS SOFTWARE IS COMPATIBLE WITH
© PLAYSTATION GAME CONSOLES WITH THE NTSC U/C DESIGNATION. U.S. AND FOREIGN PATENTS PENDING.

